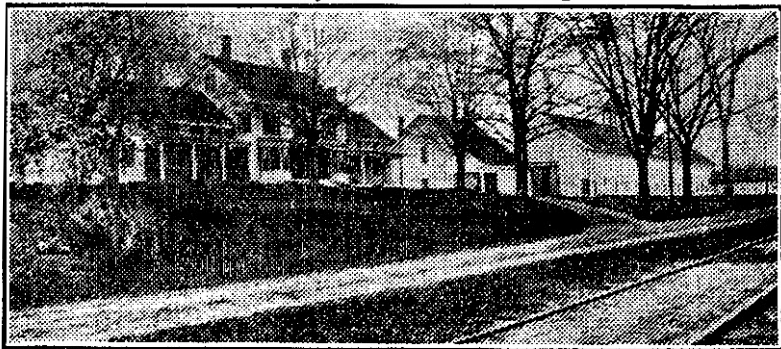


C. H. HANSON & CO., Inc., - - - - Auctioneers
OFFICE, LOWELL, MASS.

THE BEAUTIFUL JOHN H. MARSH FARM At Pelham, New Hampshire.



Pledged to absolute sale by public auction on the premises at Pelham, N. H., Wednesday, May 11th, 1910, beginning promptly at 12:30 o'clock.

The farm contains nearly 300 acres, about half pasture and woodland, in the highest state of cultivation, cutting two crops of hay every year; the land is free from stone and all work can be done by machine; an abundance of fruit; inexhaustible natural water supply in the house, barns and pasture; the buildings, large, modern house, 20 rooms, including large double parlors, two bath rooms, open fireplaces, furnace heat, wide verandas, well back from the highway, with extensive lawns surrounded by beautiful shade trees, commanding a grand view of nearly the entire property and the surrounding country; barns 185x45 and 45x50; carriage house (with men's quarters) 35x45, 200-ton ice house, corn barn, tool and milk sheds, fitted with every convenience to be found in an up-to-date set of farm buildings; all in first-class condition; excellent cellars under the entire lot; the location, one of the best in the state, on the road from Lowell to Pelham, 4 miles from Lowell, 1½ miles from Pelham; one-half hour by trolley from Lowell on the line of the Southern New Hampshire Traction Co., with cars every hour; an ideal country estate and profitable farm, within easy access to every city convenience, still in the deep country; property open to inspection up to and including day of sale. Make all inquiries to JOHN H. MARSH, Pelham, N. H. Telephone.