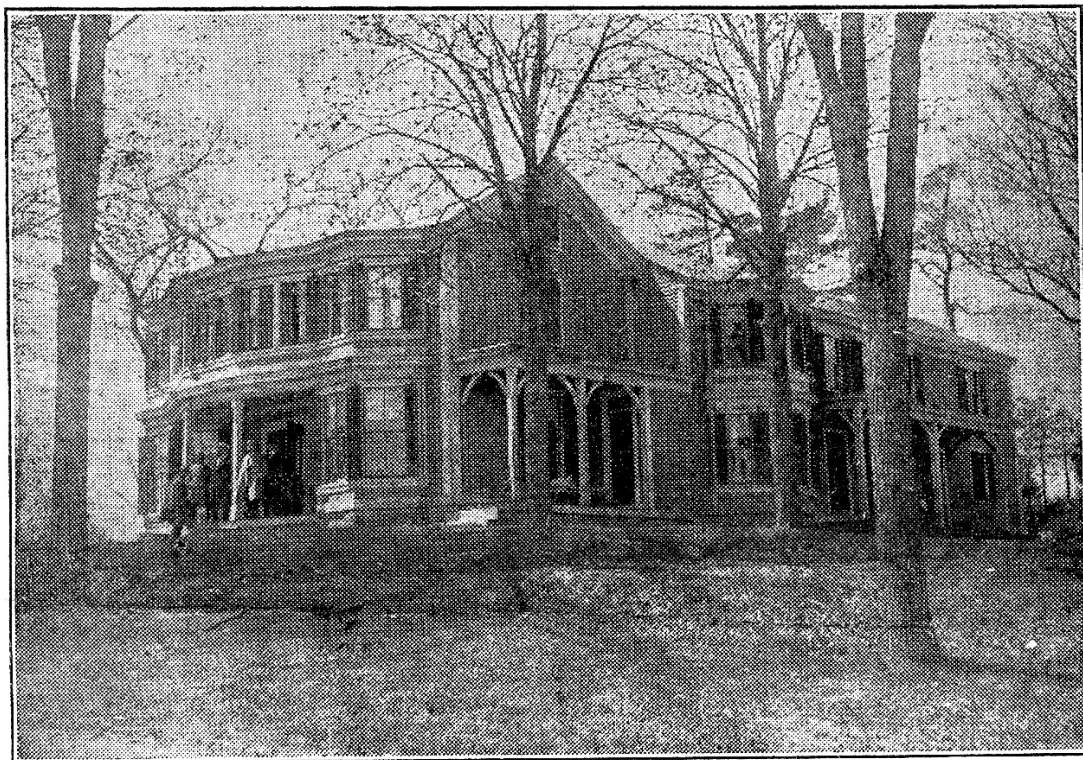


## Lowell Rotary Club Acquires Marsh Farm In Pelham For Children's Health Camp



The Lowell Rotary club today voted to purchase the Enoch Marsh homestead in Pelham, N. H. as a permanent site for its summer health camp for under-nourished children. A report favoring this location was submitted by the special camp committee, Arthur C. Spalding, chairman and was unanimously approved by the membership.

Ralph E. Runels, Richard J. Welch and G. Russell Dana. It has worked for the past two weeks scouring the countryside within a radius of 20 miles of Lowell and after looking into nearly 50 sites, the Marsh property was selected as most nearly meeting the requirements.

This farm, now occupied by Mr. and Mrs. William F. Marsh, is situated on the westerly side of the Lowell-Pelham road via Mammoth road, and is just over the New Hampshire line, about six miles from the city. It embraces a large, 12-room house and about 23 acres of land, high and dry, with a pine grove just back of the house. There is an excellent supply of drinking water and it is the club's intention to install a pressure water-system with bath room and toilet facilities.

Every member of the camp committee as well as the officers and directors of Rotary has personally inspected the property and pronounced it ideal for the uses to which it will be put.

Last summer the club cared for 20 children at a farmhouse in Amherst, N. H. during the months of July and August, employing for this purpose a registered nurse, in addition to one furnished through the courtesy of the Lowell Tuberculosis council, two play supervisors and a housekeeper. The project met with such success that it was decided to continue the

camp as a regular feature of local Rotary activities and when the Paint and Powder club turned over to Rotary \$2000 out of the net profits of its 1927 show, it was felt that the time was ripe for the purchase of a permanent camp.